

CUBIC

A ROCKWELL AUTOMATION COMPANY

CU-MINI



MODULAR SYSTEM

Small distribution boards for indoor wall mounting.

Cu-mini is a series of small distribution boards for DIN rail materials a.o.

The panel is made in the well-known CUBIC quality with light grey lacquered steel plates and a wide range of accessories comprising various types of locking devices and mounting plates.

The panel consists of a rear frame and a front frame, which ensure a simple and prompt assembly, both regarding components, wires and cables.

CU-MINI - SMALL DISTRIBUTION BOARDS

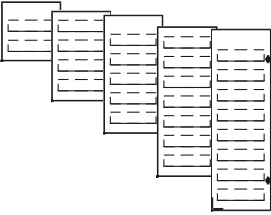
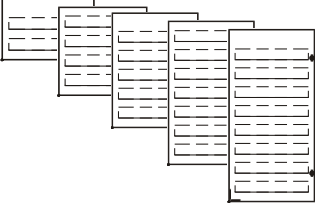
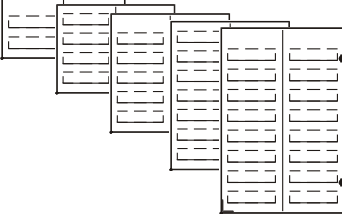


- Extremely easy to assemble.
- Flange opening in top and bottom in the entire width gives much available space for incoming and outgoing cables.
- Top and bottom collars in plastic to be clicked on without screws for easy establishment of cable access/cutting out
- 2-parts in the depth, gives simple and fast mounting
- Class II incoming section can be built in
- Meter insert can be built in
- Stable construction
- Rear frames can be assembled side by side.
- Meets the demands of IEC/EN 61439-1/3

It is supplied partly assembled in a cardboard box for easier stocking and delivery.

CU-MINI

The panel is stocked in 15 different sizes with room for between 32 and 256 DIN modules, each of 18 mm.

	MODULES W X H	DIN- MODULES	NO. OF DIN RAILS	TYPE- NO.	EAN NO.	DIMENSIONS W X H X D (MM)
	2 x 2	32	2	Cu-mini2x2	5705 100098838	380 x 380 x 165
	2 x 3	64	4	Cu-mini2x3	5705 100098845	380 x 572 x 165
	2 x 4	80	5	Cu-mini2x4	5705 100098852	380 x 764 x 165
	2 x 5	112	7	Cu-mini2x5	5705 100098869	380 x 956 x 165
	2 x 6	128	8	Cu-mini2x6	5705 100098876	380 x 1148 x 165
	3 x 2	54	2	Cu-mini3x2	5705100098883	572 x 380 x 165
	3 x 3	108	4	Cu-mini3x3	5705100098890	572 x 572 x 165
	3 x 4	135	5	Cu-mini3x4	5705100098906	572 x 764 x 165
	3 x 5	189	7	Cu-mini3x5	5705100098913	572 x 956 x 165
	3 x 6	216	8	Cu-mini3x6	5705100098920	572 x 1148 x 165
	4 x 2	64	4	Cu-mini4x2	5705100098937	764 x 380 x 165
	4 x 3	128	18	Cu-mini4x3	5705100098944	764 x 572 x 165
	4 x 4	160	10	Cu-mini4x4	5705100098951	764 x 764 x 165
	4 x 5	224	14	Cu-mini4x5	5705100098968	764 x 956 x 165
	4 x 6	256	16	Cu-mini4x6	5705100098975	764 x 1148 x 165

Internal dimension, DIN rail covering: CP2 = 309 mm, CP3 = 504 mm

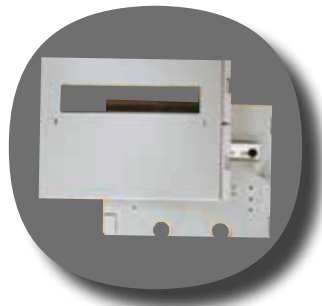
ACCESSORIES

METER INSERT

(Estimated for 63A DIN rail meter with plug pin meter terminal strip)

Required space:
Width: 2M
Height: ~ 2 pcs CP2

Type No. MBS2S
EAN No. 5705 100101354



METER INSERT

(Estimated for 63A DIN rail meter with plug pin meter terminal strip or terminal strip for direct meter)

Required space:
Width: 2M
Height: ~ 2 pcs CP2 + 1 pcs CPE2

Type No. MBB2S
EAN No. 5705 100101347



METER INSERT

(Estimated for 63A Plug pin meter)

Required space:
Width: 2M
Height: ~ 4 pcs CP2

Type No. 4506-0000S
EAN No. 5705 100132143

ACCESSORIES

PE BAR

Cu-bar 3x10

B= 2M, Type No. 4504-0200 EAN No. 5705 100099101

B= 3M, Type No. 4504-0300 EAN No. 5705 100099118

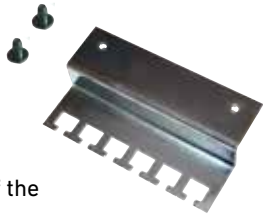
B= 4M, Type No. 4504-0400 EAN No. 5705 100099125



CABLE SUPPORT

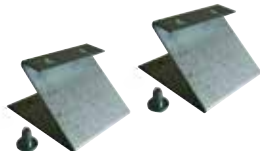
Cable support to be put at the back of the DIN rails for optimum cable fitting

Type No. 4501-0101S EAN No. 5705 100128429



BRACKET FOR COUNTERSINKING OF DIN RAILS

Type No. 4501-0000 EAN No. 5705 100098999



MOUNTING PLATE

(complete No.)

GP2x1mini EAN No. 5705 100099132

GP3x1mini EAN No. 5705 100099149

GP3x2mini EAN No. 5705 100099156

GP4x1mini EAN No. 5705 100099163

GP4x2mini EAN No. 5705 100099170



MOUNTING PLATE WITH COVERING

(complete No.)

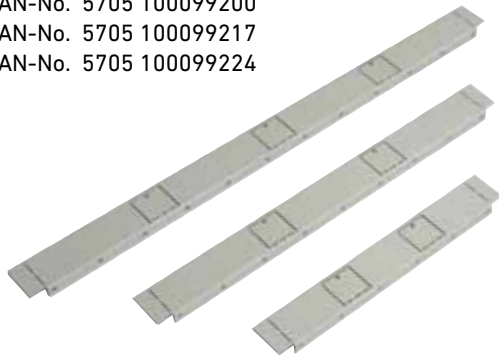
afgp2x1mini EAN-No. 5705 100099187

afgp3x1mini EAN-No. 5705 100099194

afgp3x2mini EAN-No. 5705 100099200

afgp4x1mini EAN-No. 5705 100099217

afgp4x2mini EAN-No. 5705 100099224



DIVIDING PROFILES FOR PARTITIONING A 4M WIDE CU-MINI

Type No. 4506-0200 EAN 5705100129570

Type No. 4506-0300 EAN 5705100129587

Type No. 4506-0400 EAN 5705100129594

LOCKING DEVICES

(Grip is default)

GRIP, COMPLETE

Type No. 0720-1001S EAN No. 5705 100127856



SNAP SCREW, COMPLETE

Type No. 0720-2001S EAN No. 5705 100127880



DOUBLE BIT LOCK, 3 MM, COMPLETE

Type No. 0720-4001S EAN No. 5705 100127927



DOUBLE BIT LOCK, 5 MM, COMPLETE

Type No. 0720-5001S EAN No. 5705 100127941



TRIANGLE LOCK, 8 MM, COMPLETE

Type No. 0720-6001S EAN No. 5705 100127965



WING HANDLE, KCOMPLETE STANDARD KEY

typenr.: 0721-1031S EAN nr.: 5705100128511



BLIND COVER FOR DIN RAILS

Type No. 2028-0000 EAN No. 5705 100025636



EARTH TERMINAL 7X10 MM²

Type No. 2077-0001 EAN No. 5705 100128412



CLASS II INCOMING SECTION

Type No. 4505-0201S EAN No.. 5705 100129297

Type No. 4505-0202S EAN No.. 5705 100129310

Type No. 4505-0301S EAN No. 5705 100129341

Type No. 4505-0302S EAN No. 5705 100129365



CLASS II DIN-RAIL FOR INCOMING SECTION

2M: Type No. .4505-0269S EAN No. 5705 100129327

3M: Type No. .4505-0461S EAN No. 5705 100129372

BRACKET FOR FUGA

Typenr. 4509-0012S

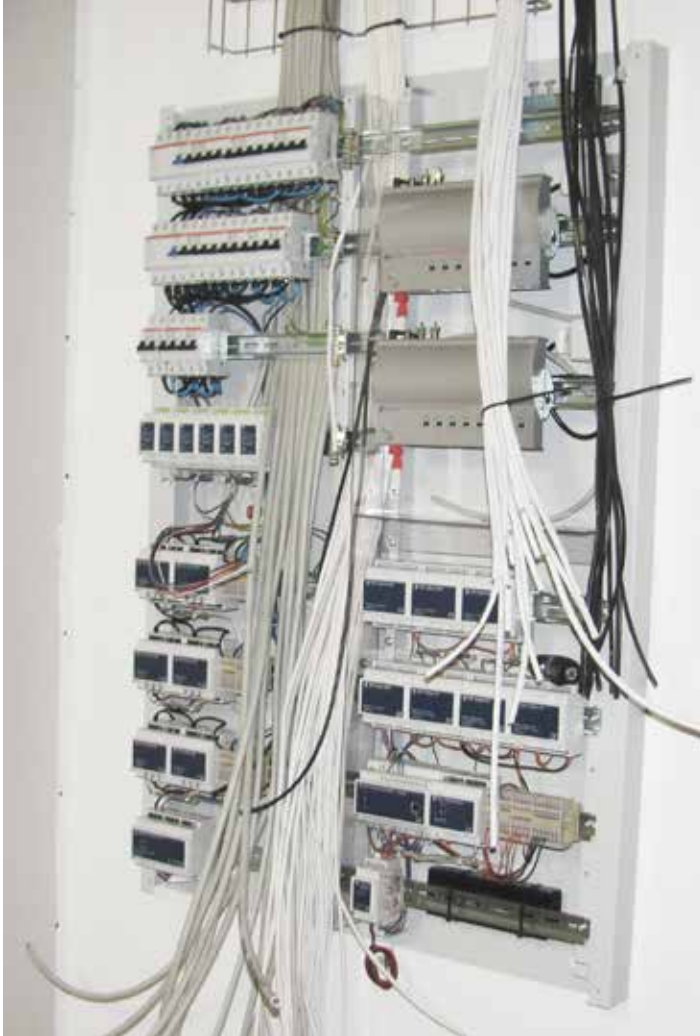
INSULATION PLUG FOR CLASS II

Type No. 2050-4215 EAN No. 5705 100093734



INTELLIGENT BUILDING INSTALLATIONS (IBI)

For IBI installations many more cables are required than for traditional building installations.



CUBIC has upgraded Cu-mini to intelligent building installations together with contractors and electricians, who work with this type of fittings every day.

Previously, extra precautions were taken behind the switchboard in order to make room for all the cables. Cu-mini from CUBIC is a real cost-saver. Now the finished switchboard can be put up on the wall, and the cables can be installed directly into the switchboard behind the DIN rails.

ACCESSORIES

DIVIDING PLATES FOR IBI

Vertical dividing plate 6M, complete
Type No. 4509-0006S

Horizontal dividing plate 2M, complete
Type No. 4509-0010S

Beslag til Fuga
Type No. 4509-0012S

The intersection for the tele/data installation can be integrated into the panel, so no loose patch cables suspend into the room, and a clean design of the installation is thus secured.

Sufficient space is available for organizing the patch cables neatly and orderly.

Fitting for Fuga socket can be mounted behind the DIN rails.



MOUNTING INSTRUCTION



Bags with locking devices and mounting screws



Coverings (4 pcs.)

Door



Flanges (2 pcs.)

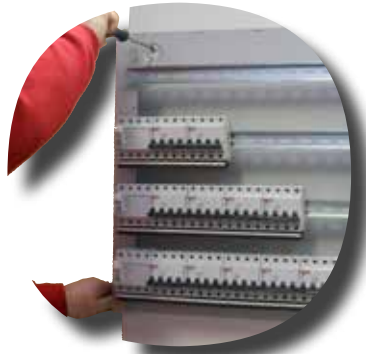
Front frame

Rear frame fitted with DINrails

Cu-mini is supplied partly assembled in a cardboard box. Above you see the contents of Cu-mini X x X.



Electrical components are fitted.



The rear plate is fitted on the wall.



Cables and front frame are fitted.



Flanges are fitted in top and bottom.



Coverings are fitted.



The door is fitted.



Dividing profiles mounted - accessories.

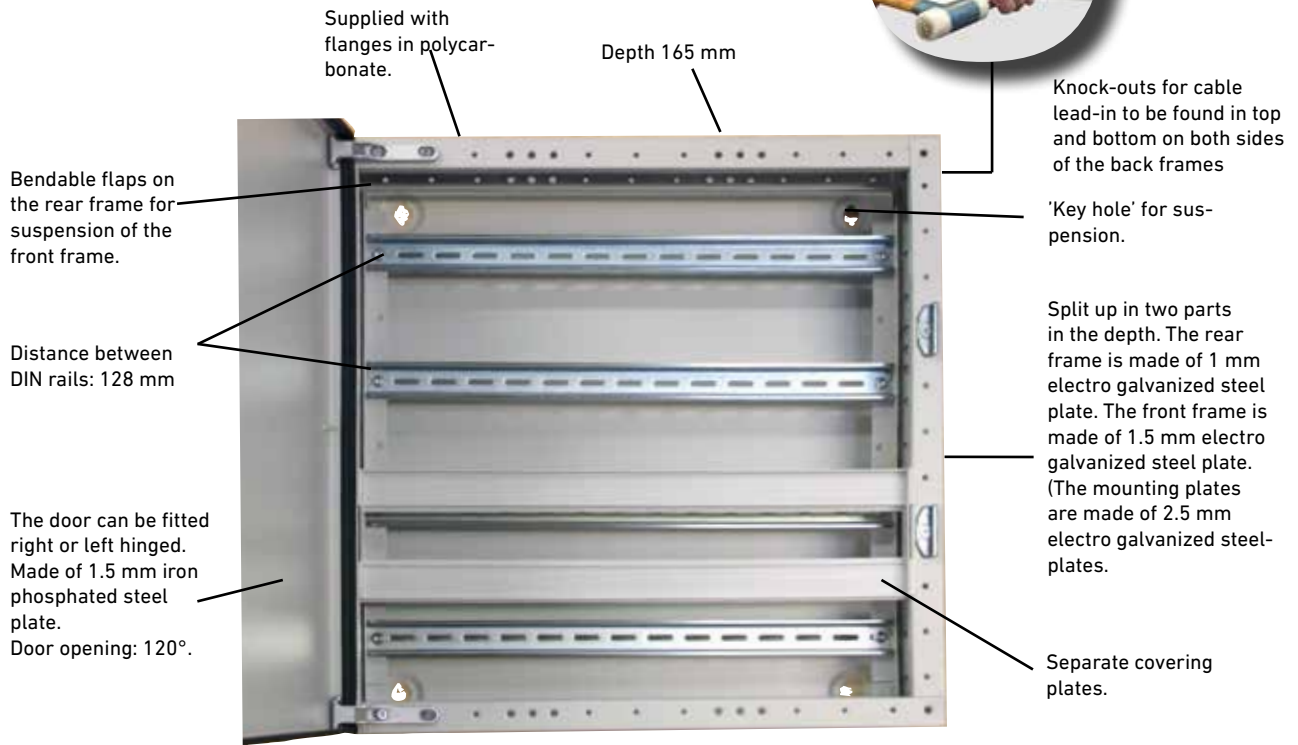


Meter insert mounted - accessory.



Class II section mounted - Accessory.

TECHNICAL DATA



Standard colour: RAL 7035 light grey, powder lacquered

Standards

IEC/EN 61439-1 og IEC/EN 61439-3

Elektrotechnical data

Insulation class 1 and 2
 Degree of protection (standard) IP2xC
 Rated voltage Up to 690 V
 Rated current Up to 250 A
 Short-time withstand current I_{cw} Max. 10 kA
 Frequency 50 Hz

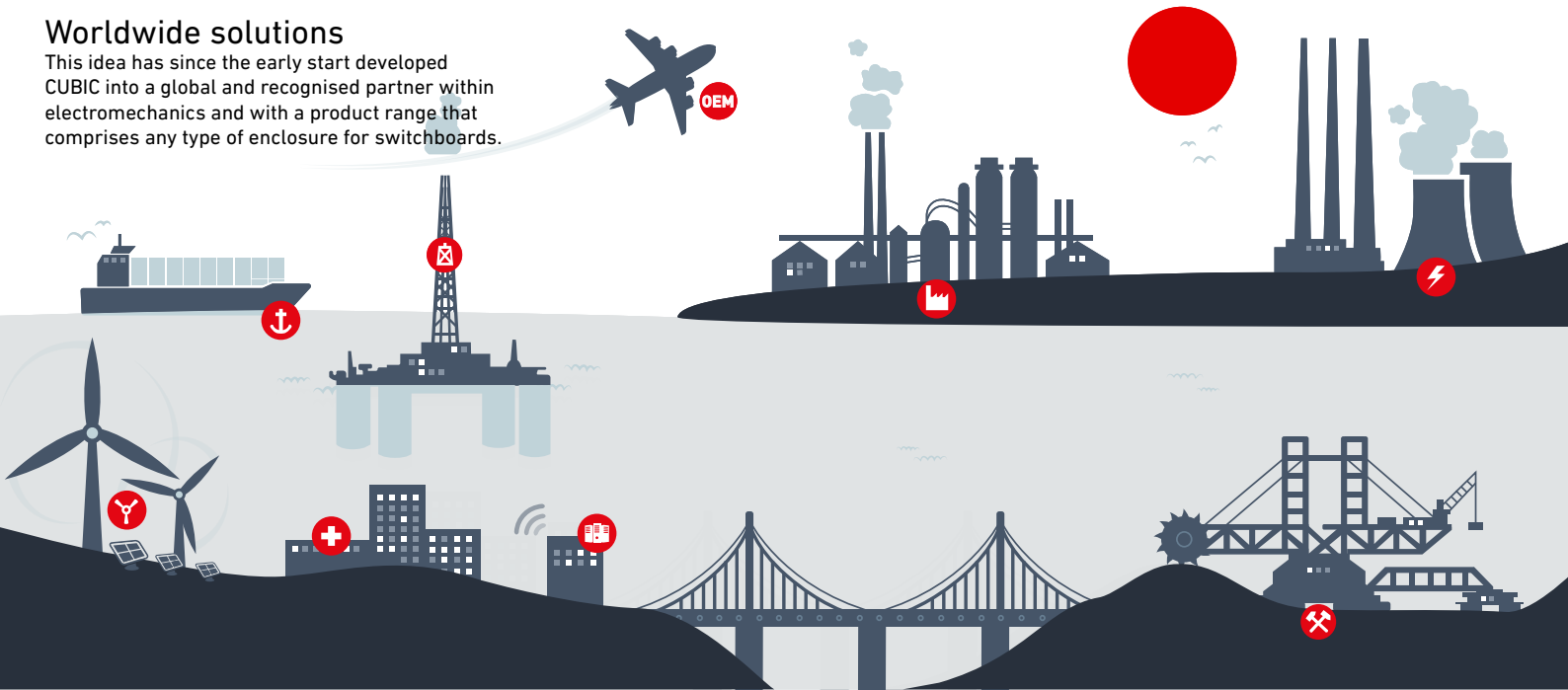
Only for indoor use!

Max. load 80%
 on components and cables
 in compliance with IEC 61439-1

$\Delta t =$	10K	15K	20K	25K	30K
Cu-mini2x2	16	27	38	49	60
Cu-mini2x3	21	34	48	61	75
Cu-mini2x4	26	42	58	74	90
Cu-mini2x5	31	49	68	86	105
Cu-mini2x6	36	57	78	99	120
Cu-mini3x2	18	31	43	57	68
Cu-mini3x3	24	40	56	72	88
Cu-mini3x4	30	49	68	87	108
Cu-mini3x5	36	58	81	102	128
Cu-mini3x6	42	67	93	118	148
Cu-mini4x2	22	38	54	70	86
Cu-mini4x3	29	49	69	89	109
Cu-mini4x4	36	60	84	108	132
Cu-mini4x5	43	71	99	127	155
Cu-mini4x6	50	82	114	147	179

Worldwide solutions

This idea has since the early start developed CUBIC into a global and recognised partner within electromechanics and with a product range that comprises any type of enclosure for switchboards.



DENMARK

(Head office)

CUBIC-Modulsystem A/S
Skjoldborgsgade 21
DK-9700 Broenderslev
Denmark
Tel. +45 9882 2400
info@cubic.eu

NORWAY

CUBIC-Norge A/S
Postboks 33
Jeksleveien 55
3300 Frogner
Norge
Tel. +47 6386 7100
info@cubic-norge.no

SWEDEN

CUBIC Svenska AB
Box 353
Hantverksgatan 5 B
S-571 24 Nässjö
Sweden
Tel. +46(0)380 741 70
info@cubicsvenska.se

POLAND

CUBIC Polska Sp. Z o.o.
North West Logistics Park
Kniewska Street 5
PL-70-846 Szczecin
Poland
Tel. +45 9882 2400
info@cubic.eu

U.K.

CUBIC Modular Systems
(U.K.) Ltd
Unit 1, Queensmead Place
Textilose Road, Trafford Park
Manchester, M17 1PH
U.K.
Tel. +44 161 876 4742
info@cubic-uk.co.uk

IRELAND

CUBIC-Modulsystem A/S
Units 64 & 65
Parkwest Enterprise Centre
Parkwest Industrial Park
IRL-Dublin 12
Ireland
Tel. +353 16 215 288/289
info@cubic.ie

CHINA

CUBIC Electromechanical
System (Tianjin) Co., Ltd
30 Xin Ye 3rd Street
TEDA West Building 17
Tianjin, 300462
China
Tel. +86 (22) 5983 2158
info@cubic.asia

BELGIUM

CUBIC-Modulsystem A/S
Chaussée de Namur 85A
B-1400 Nivelles
Belgium
Tel. +32 6721 2979
info@be.cubic.dk

INDIA

CUBIC Modular System India
Private Limited
No. B01, ESR Industrial and
Logistics Park, Varanavasi
Village, Oragadam, Walajabad
Taluk, Kanchipuram District
TamilNadu, India - 631 604.
Tel. +91 44 4028 2506
info@cubic.eu

SPAIN

CUBIC Modular System
España SL.
Ronda Maiols, 1 - Ed.,
BMC, local 349
08192 Sant Quirze del Vallès
Barcelona, Spain
Tel. +34 684 259 748
info@es.cubic.eu

THE NETHERLANDS

CUBIC Nederland BV
Kelvinring 54
2952 BG Alblasserdam
The Netherlands
Tel. +31 (0) 627 064 567
info@nl.cubic.eu

HEAD OFFICE - DENMARK

CUBIC-Modulsystem A/S
Skjoldborgsgade 21
DK-9700 Broenderslev
Denmark
Tel: +45 9882 2400
Email: info@cubic.eu
www.cubic.eu

CUBIC
A ROCKWELL AUTOMATION COMPANY